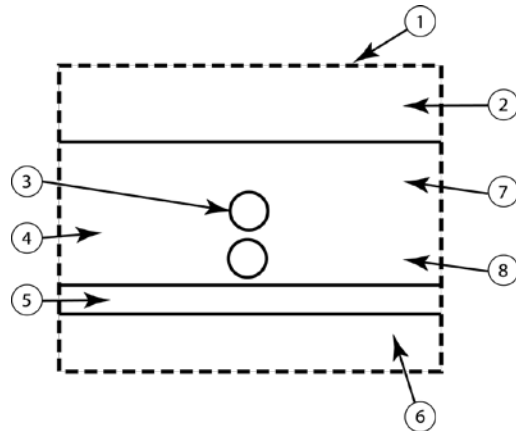


WHMIS - Label and Hazard Class Symbols

The main purpose of Workplace Hazardous Materials Information System (WHMIS) is to provide information to the workers on hazardous material used in the workplace.

The supplier label has required components:

- | | |
|-------------------------------|-----------------------------------|
| 1. Hash Mark Border | 5. See Material Safety Data Sheet |
| 2. Product Identifier | 6. Supplier Identifier |
| 3. Class Symbols | 7. Risk Phrase(s) |
| 4. Precautionary Statement(s) | 8. First-aid Measures |



The following are hazard class symbols. Do you use any of these products? Are you aware of the safe handling procedure for these products?

	Compressed Gas		Material Causing Other Toxic Effects
	Flammable & Combustible Material		Biohazardous Infectious Material
	Oxidizing Material		Corrosive Material
	Materials Causing Immediate & Serious Toxic Effects		Dangerously Reactive Material

Safety Talk Discussion

Be Accountable: Choose safety - work safe - and go home injury free!